

SPARKlight

Road to **STANDARD** flexibility

OLCI
ENGINEERING

A MEMBER OF EFORT GROUP

GENERAL INDUSTRY

▶ SHAPE YOUR IDEAS

Compose your robotic cell

Thanks to the precious experience acquired and the innate attention to the needs of the Customers, O.L.C.I. Engineering S.r.l. can now further facilitate each production process.

The mission that has guided O.L.C.I. Engineering S.r.l. since its inception, and which still represents it, is to find continuous innovative solutions that perfectly match customer expectations, giving life to a new process of flexible standardization.

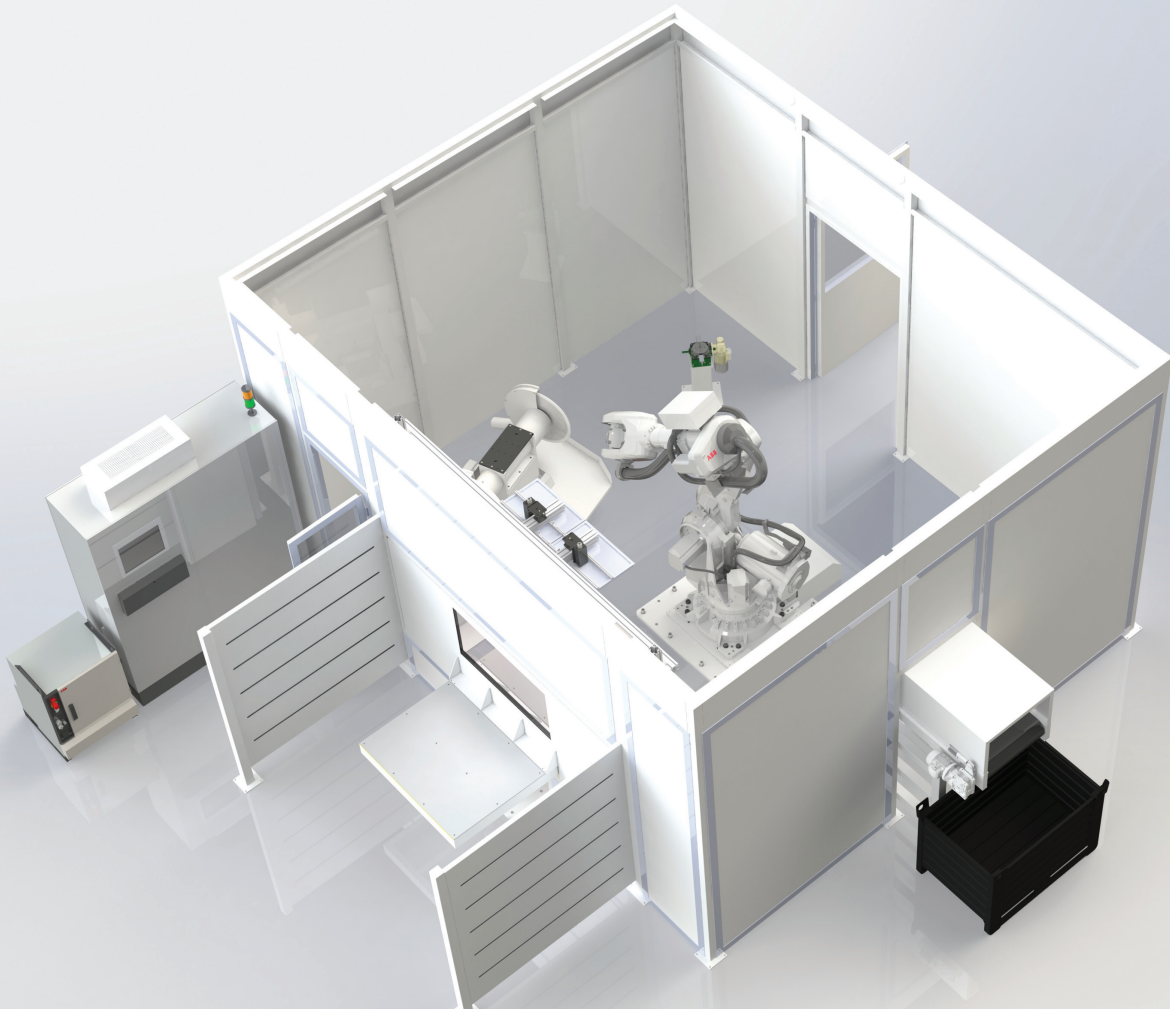
“The **FUTURE** is closer than you **THINK**”

Main characteristics

SPARK^{light}

▶ Road to standard flexibility

- Realization of different processes on the castings (cutting, deburring, etc.) with a high degree of accuracy;
- Process of cast iron and steel castings;
- High load capacity, with weight of the part being handled by the Robot up to 60 kg.
- Drastic reduction in plant downtime, high flexibility and efficiency mainly determined by:
 - Vision system at the feed warehouse;
 - Process operating units equipped with quick tool change systems;
 - Integration with the most modern and performing off-line programming software for the preventive evaluation of process cycle times and reachability, with consequent reduction of robot programming times.

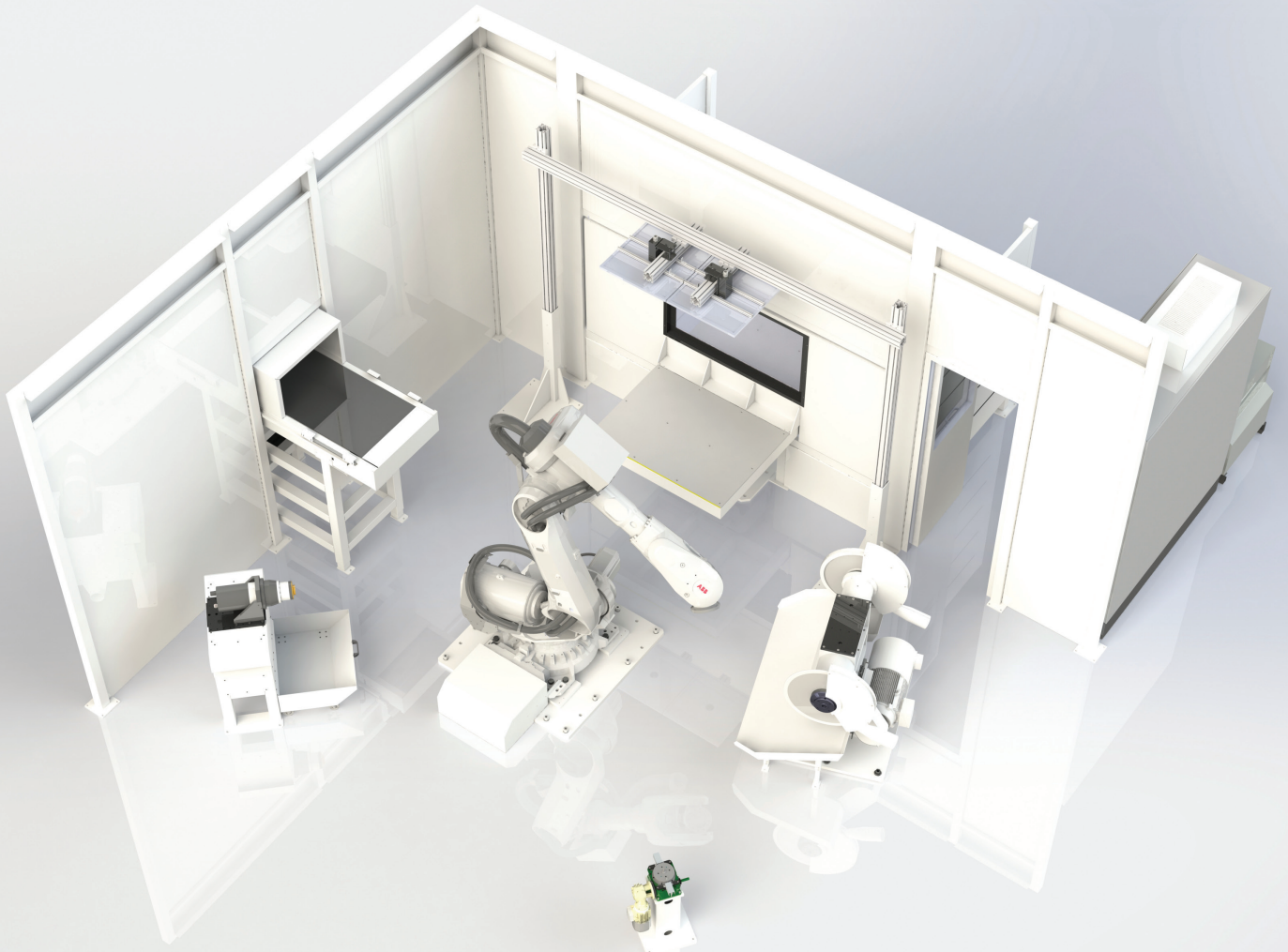


Solution with rotating loading table and unloading conveyor

Main characteristics

▼ **High degree of customization to meet multiple and diversified production needs, with the possibility to integrate additional process modules and to personalize the degree of autonomy of non-monitoring of the cell.**

- Significant reduction in set-up times;
- Possibility of automatic scrap evacuation;
- High performance in terms of productivity, with an estimated ratio of 1: 4 compared to the operations performed manually by the operator;
- Turnkey solution, complete with soundproof protection and soundproofing cabin, designed for connection to the customer's centralized suction system;
- Adequacy to the latest and highest safety standards dictated by the Machinery Directive;
- Synoptic for supervision and monitoring of the robotic cell, complete with "user friendly" user interface;
- Predisposition for remote connection and "Graphic Remote Control O.L.C.I. Engineering S.r.l." remote assistance service;
- Full compatibility with the requirements dictated by the "National Industry 4.0 Plan";
- Personalized training plan, held by highly specialized O.L.C.I. Engineering S.r.l. personnel;
- Possibility of combining with the range of services and programming packages provided by O.L.C.I. Engineering S.r.l.;
- Possibility to take advantage of all the advantages deriving from O.L.C.I. Engineering S.r.l. Cares services.



Solution with rotating loading table and unloading conveyor

BASIC package

SPARKlight

Basic

- 6-axis anthropomorphic robot with a wrist carrying capacity of 235 kg and with characteristics suitable for the process in foundry environments;
- Base for fixing and supporting the robot;
- Single gripper gripping system;
- Intermediate piece support station for centering and / or overturning operations;
- Cutting and grinding unit;
- Deburring unit with electrospindle, complete with liquid cooling system;
- Cast feeding and unloading magazine, according to potential alternatives:
 - Rotating loading table combined with conveyor drain;
 - Loading and unloading conveyors;
 - Vision system at the loading warehouse.

SPARK^{light}

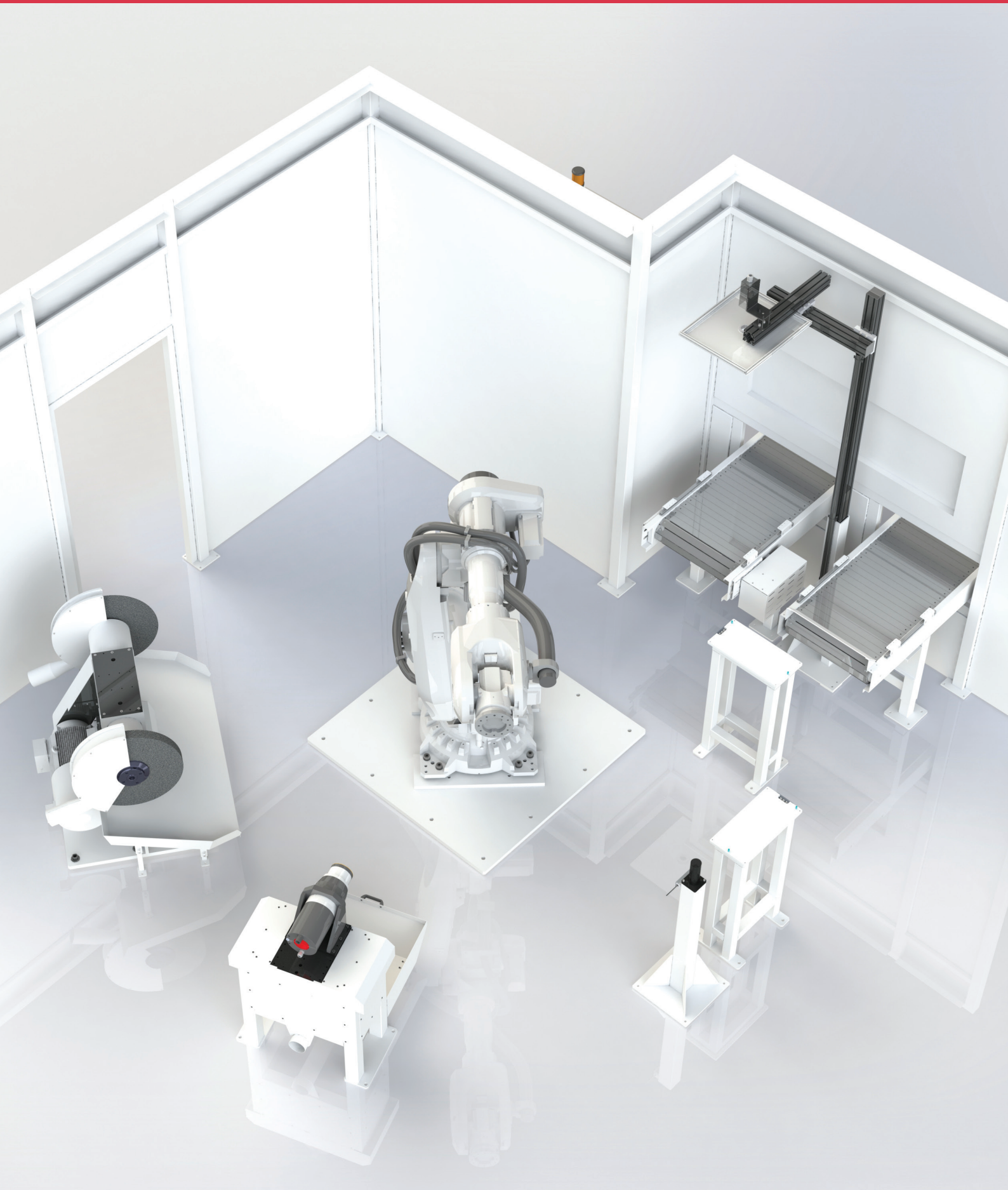
Basic

- Soundproof protection and soundproofing cabin, complete with provision for connection to the customer's centralized suction system;
- Electric equipment;
- Robotic cell supervision and monitoring synoptic;
- Study, design, assembly, wiring, programming and pre-testing at the O.L.C.I. Engineering S.r.l. factory;
- Installation, commissioning and testing at the Customer's plant;
- CE certification Annex IIA;
- Full compatibility with the requirements dictated by the "National Industry 4.0 Plan";
- Personalized training plan, held by highly specialized O.L.C.I. Engineering S.r.l. personnel;
- Possibility of combining with the range of services and programming packages provided by O.L.C.I. Engineering S.r.l.;
- Possibility to take advantage of all the advantages deriving from O.L.C.I. Engineering S.r.l. Cares services.

BASIC package

Solution with loading and unloading conveyors





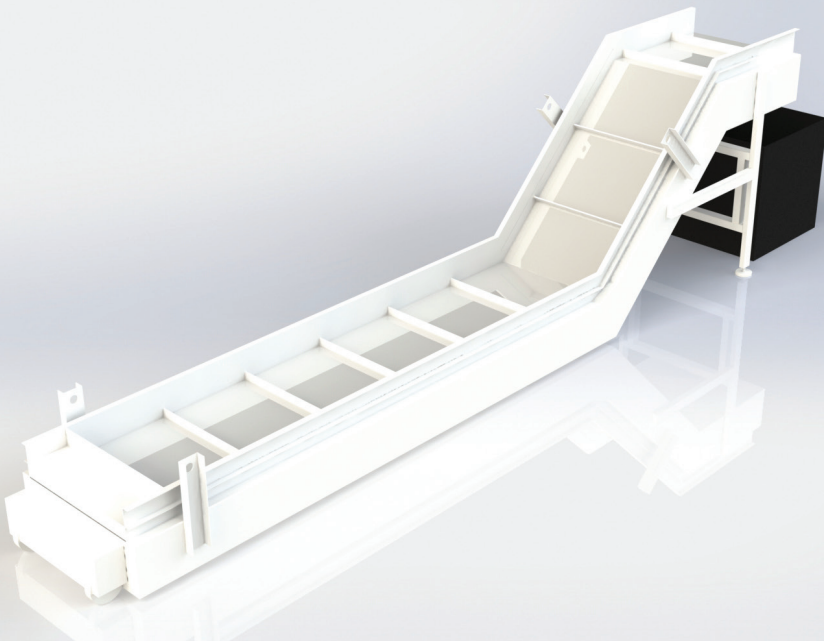
Solution with loading and unloading conveyors

SPARK^{light}

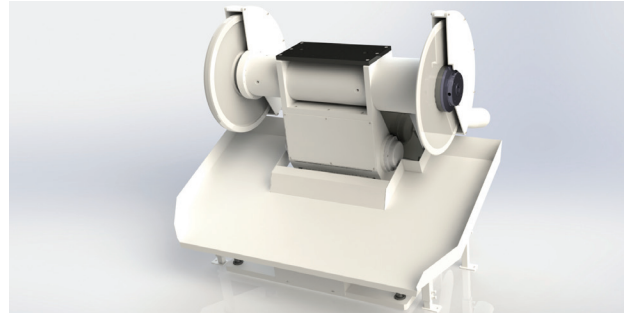
Built
by you

- Robot protection system, made of technical fabric;
- Additional cutting and grinding unit;
- Deburring unit with additional electrospindle;
- Conveyor suitable for the evacuation of the scraps deriving from the cutting / deburring operations, with addressing outside the robotic cell;
- Off-line programming software;
- Adaptation of the robotic cell to comply with the minimum requirements relating to the enabling technologies provided for by the "National Industry 4.0 Plan";
- "O.L.C.I. Engineering S.r.l. cares" services (remote assistance, etc.);
- Training plans tailored to customer needs;
- Any specific options evaluated in collaboration with our specialists.

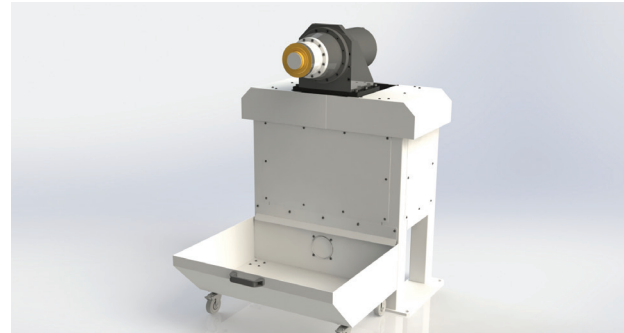
Optional BUILT BY YOU



Scrap evacuator



Double grinding and cutting unit



Deburring unit

OLCI
ENGINEERING
A MEMBER OF EFORT GROUP

O.L.C.I. Engineering S.r.l.

Italy | 25045 Castegnato (Bs)
Via Padana Superiore, 111/A
T. +39 030 2141193

infobs@olcieng.eu
www.olcieng.eu

